

1 μm

Mag = 13.00 K X

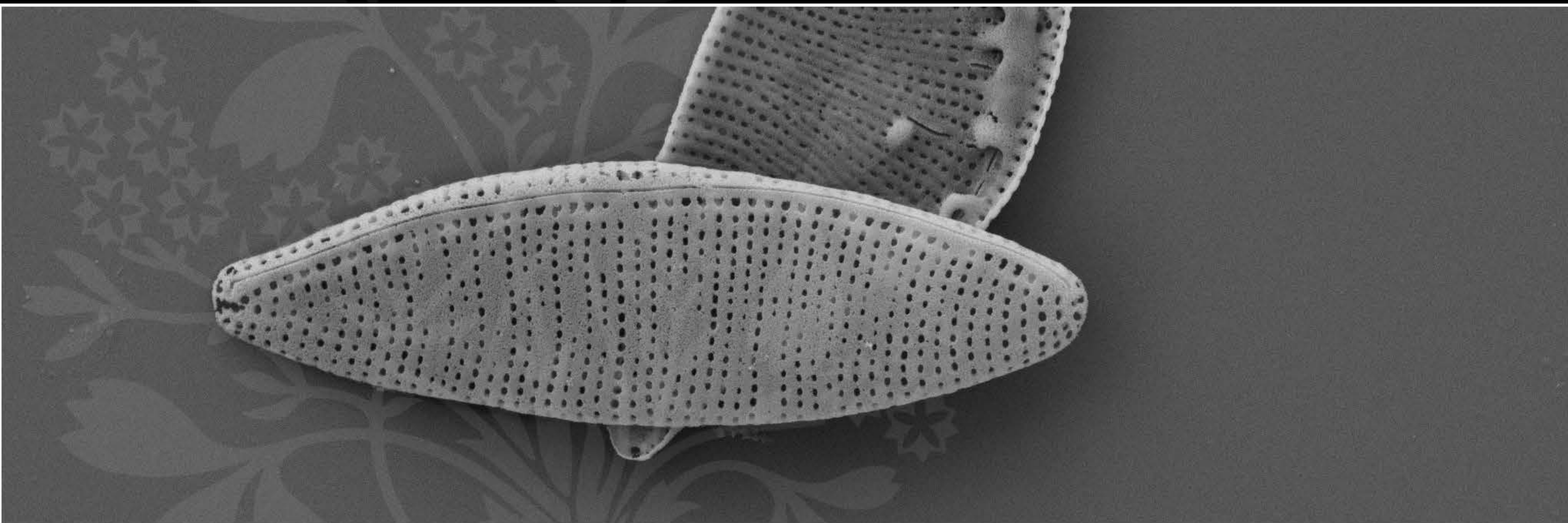
EHT = 5.00 kV

Signal A = SE2 Date :8 Jun 2017

WD = 4.4 mm

File Name = TCC586_01.tif





1 μm

Mag = 13.00 K X

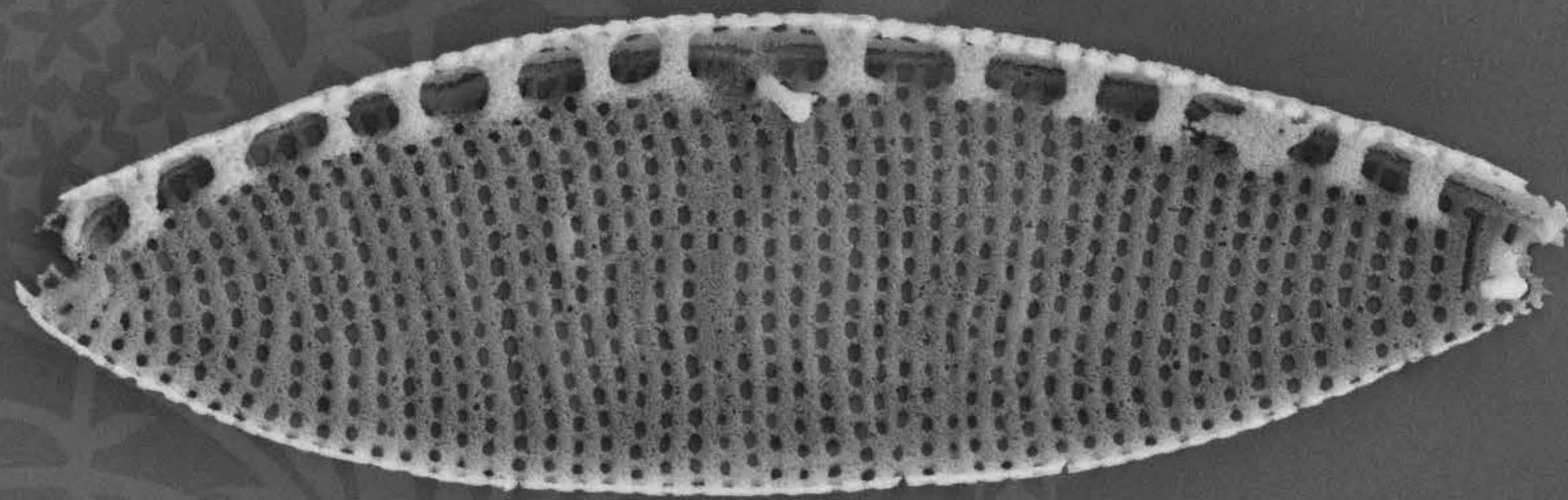
EHT = 5.00 kV

Signal A = SE2 Date :8 Jun 2017

WD = 4.4 mm

File Name = TCC586_02.tif





1 μm

Mag = 13.00 K X

EHT = 5.00 kV

Signal A = SE2 Date :8 Jun 2017

WD = 4.4 mm

File Name = TCC586_03.tif





3 μm
└───┘

Mag = 2.58 K X

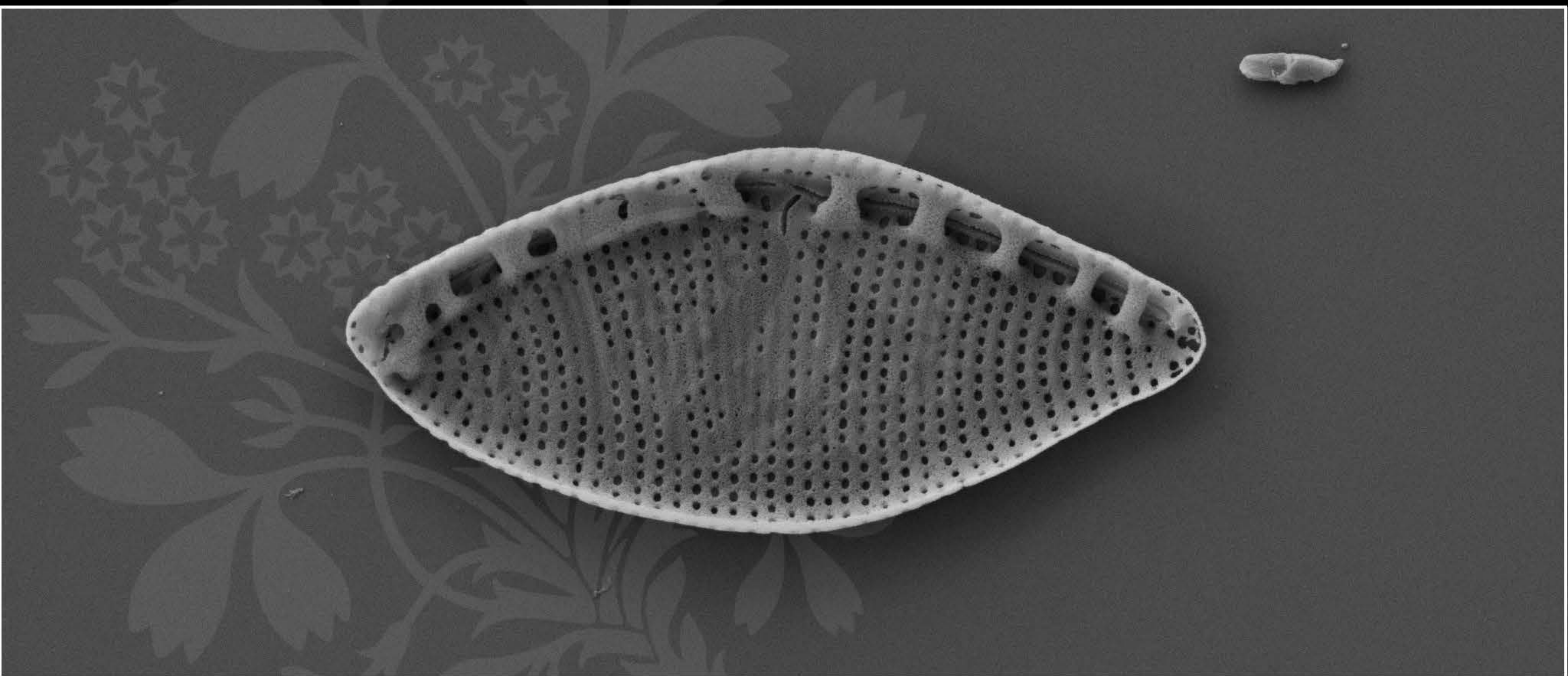
EHT = 5.00 kV

Signal A = SE2 Date : 8 Jun 2017

WD = 4.4 mm

File Name = TCC586_04.tif





1 μm

Mag = 16.00 K X

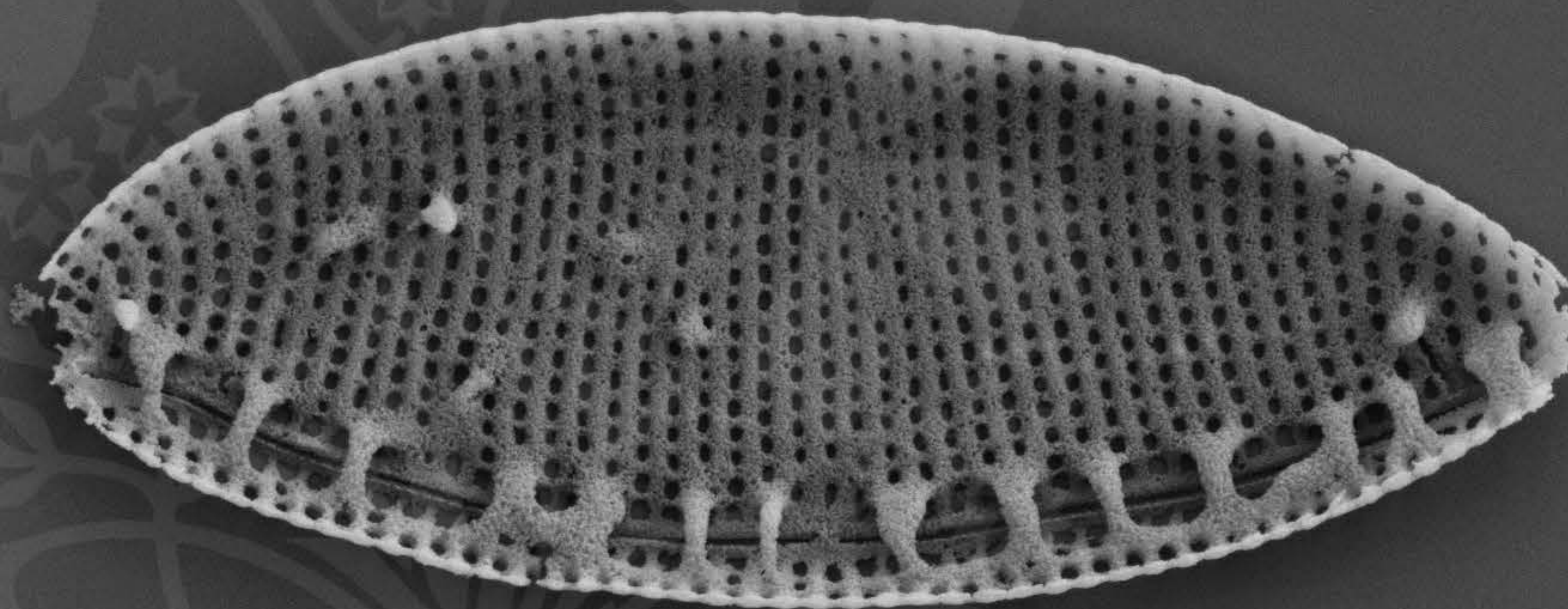
EHT = 4.00 kV

Signal A = SE2 Date :28 Sep 2017

WD = 5.2 mm

File Name = TCC586_05.tif





1 μm

Mag = 16.00 K X

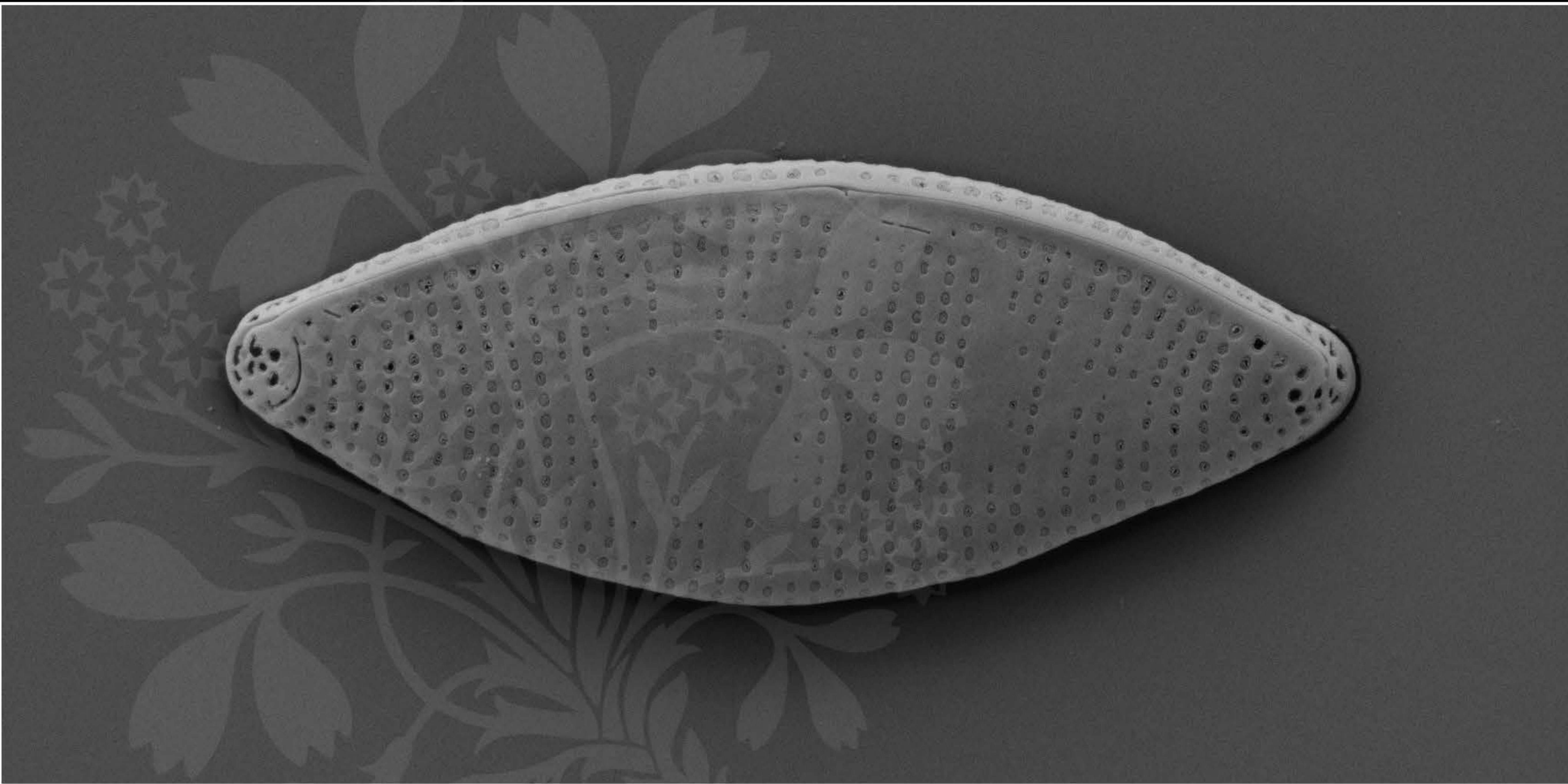
EHT = 4.00 kV

Signal A = SE2 Date :28 Sep 2017

WD = 5.2 mm

File Name = TCC586_06.tif





1 μm

Mag = 20.00 K X

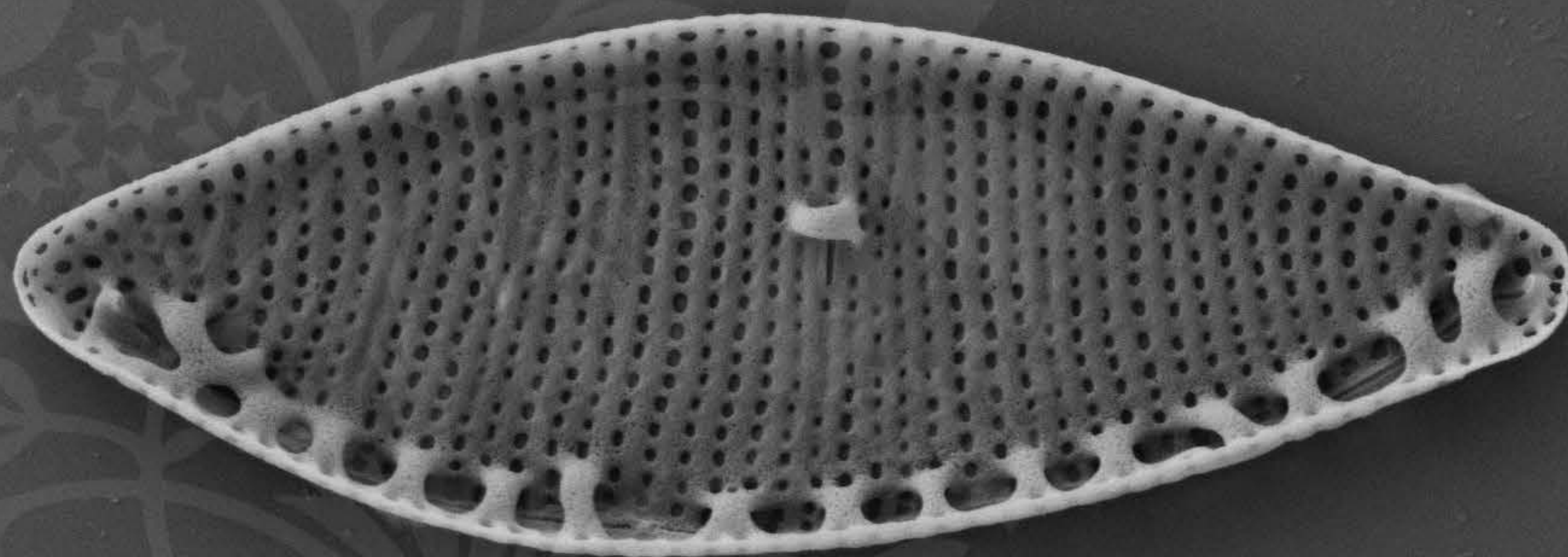
EHT = 4.00 kV

Signal A = SE2 Date :28 Sep 2017

WD = 5.2 mm

File Name = TCC586_07.tif





1 μm

Mag = 16.00 K X

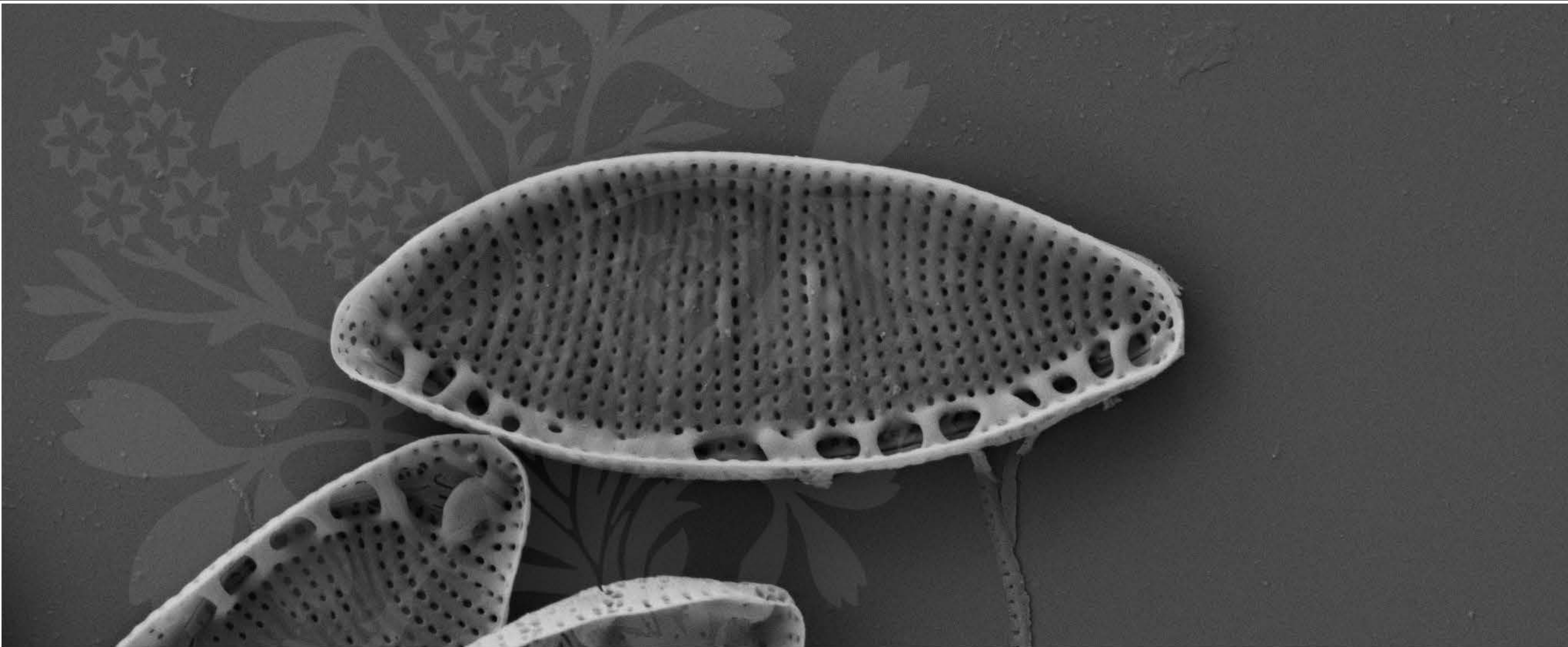
EHT = 4.00 kV

Signal A = SE2 Date :28 Sep 2017

WD = 5.1 mm

File Name = TCC586_08.tif





1 μm

Mag = 16.00 K X

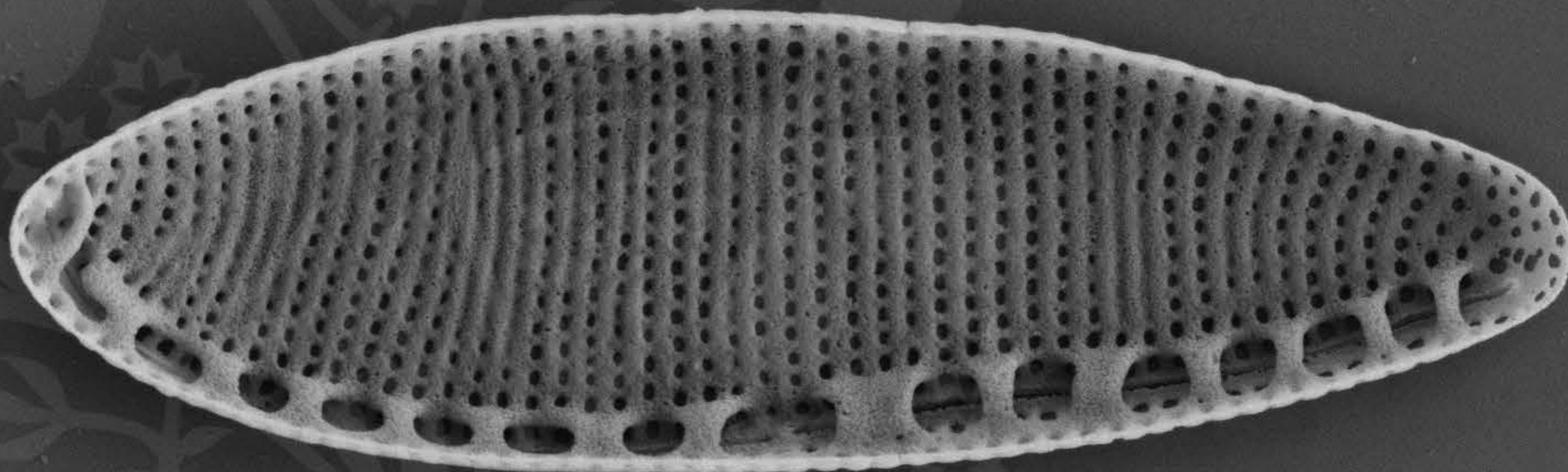
EHT = 4.00 kV

Signal A = SE2 Date :28 Sep 2017

WD = 5.1 mm

File Name = TCC586_09.tif





1 μm

Mag = 16.00 K X

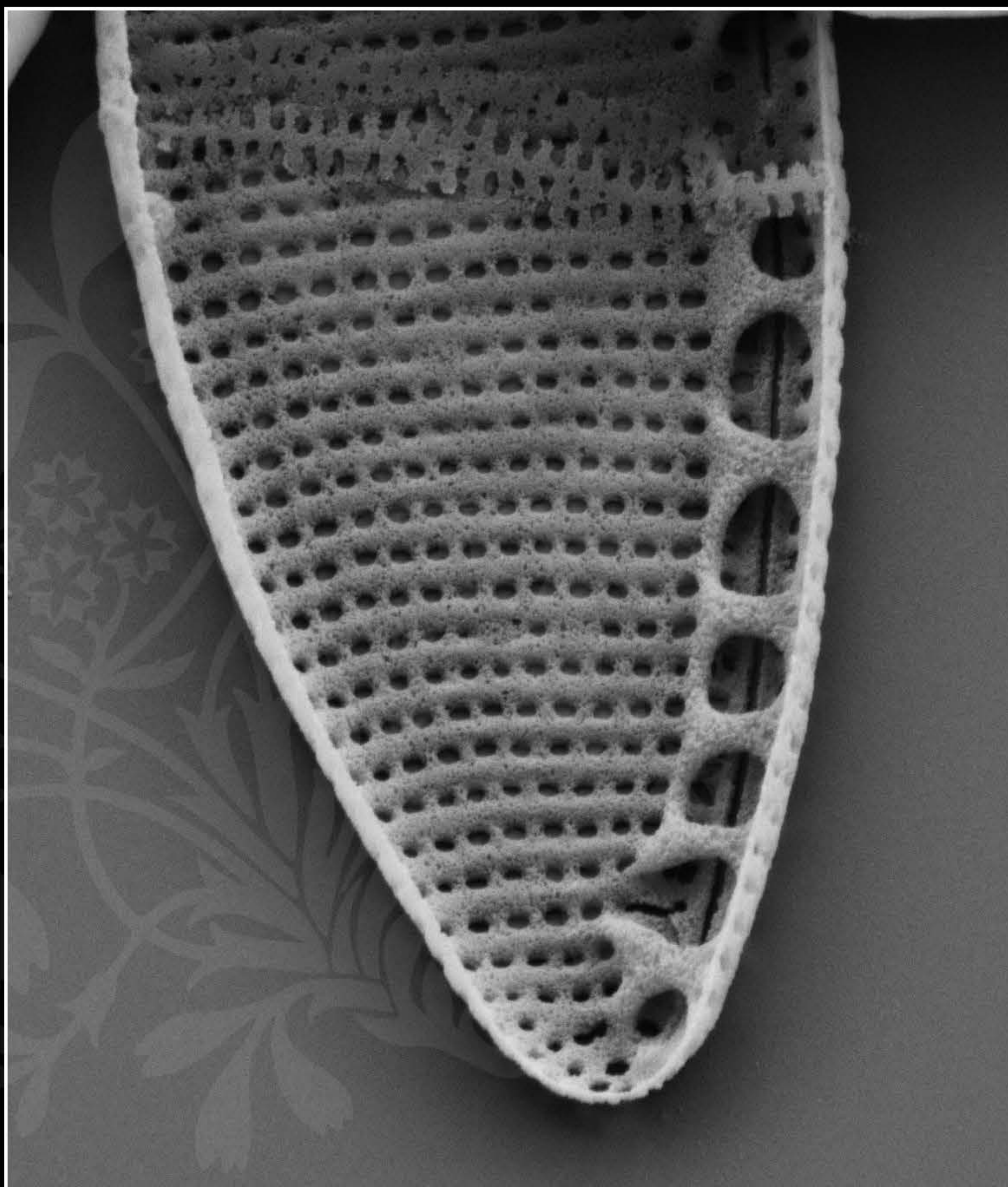
EHT = 4.00 kV

Signal A = SE2 Date :28 Sep 2017

WD = 5.1 mm

File Name = TCC586_10.tif





200 nm
└─┘

Mag = 30.00 K X

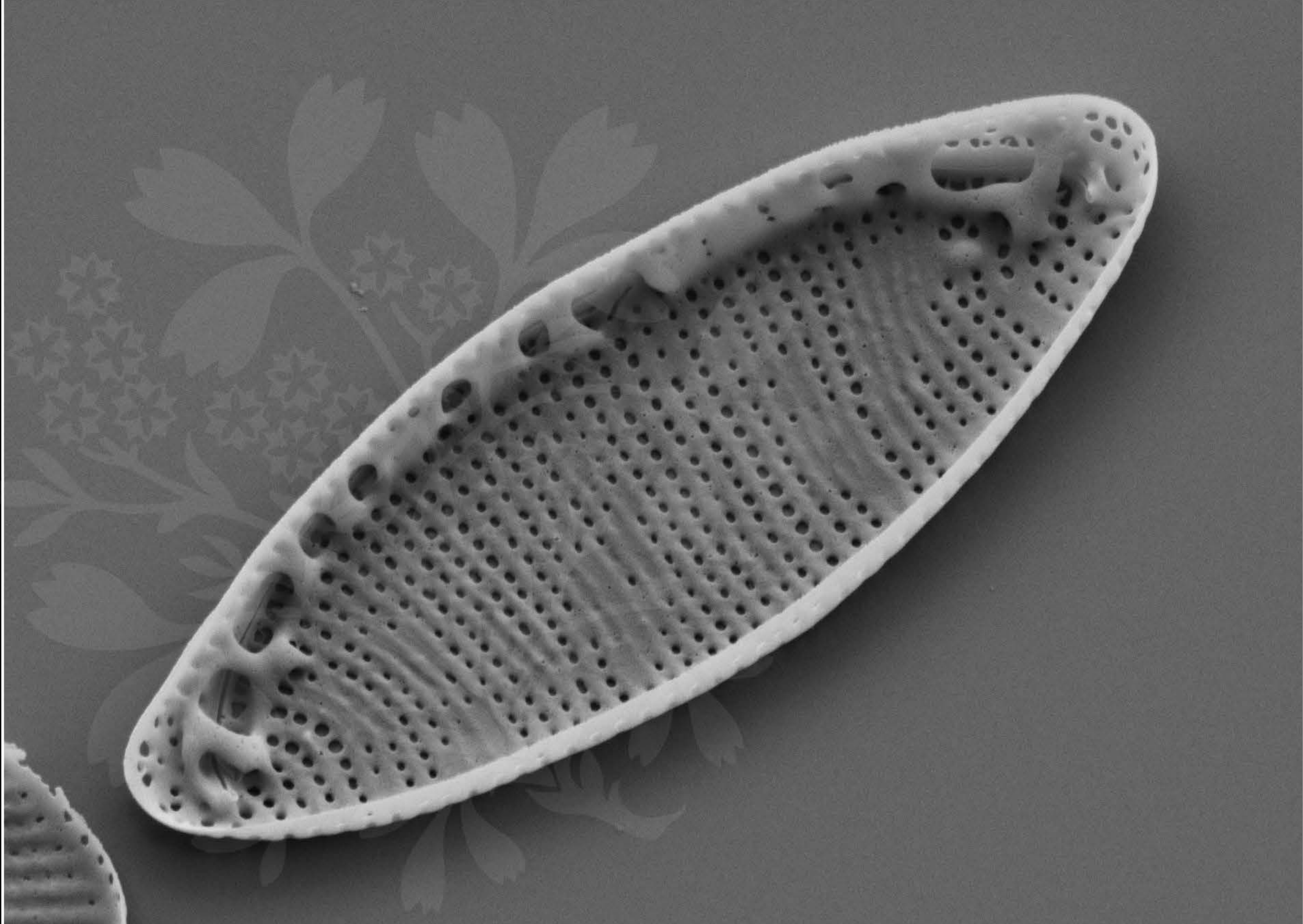
EHT = 4.00 kV

Signal A = SE2 Date :28 Sep 2017

WD = 5.2 mm

File Name = TCC586_11.tif





300 nm
└───┘

Mag = 25.00 K X

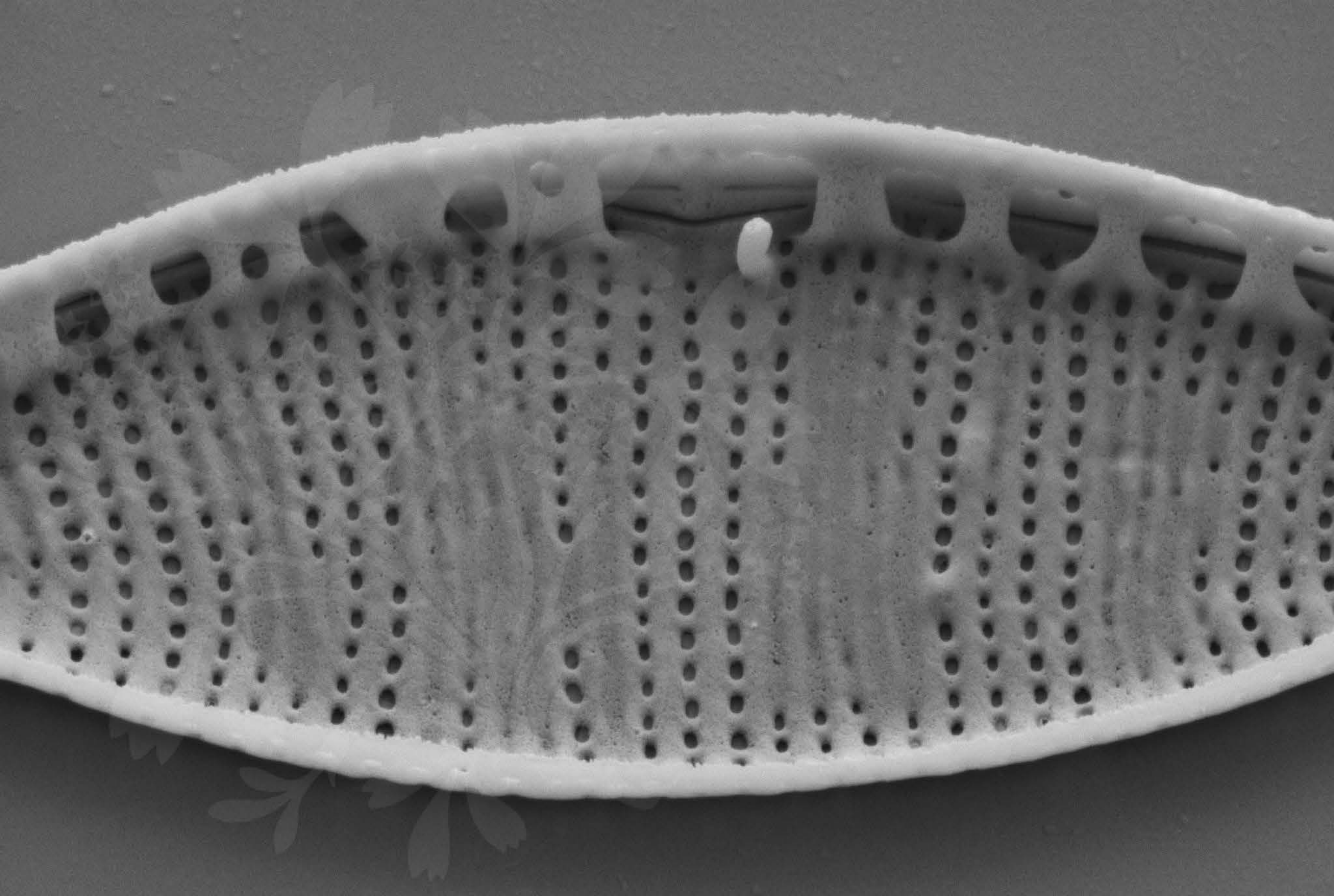
EHT = 4.00 kV

Signal A = SE2 Date :28 Sep 2017

WD = 5.2 mm

File Name = TCC586_12.tif





200 nm
└───┘

Mag = 40.00 K X

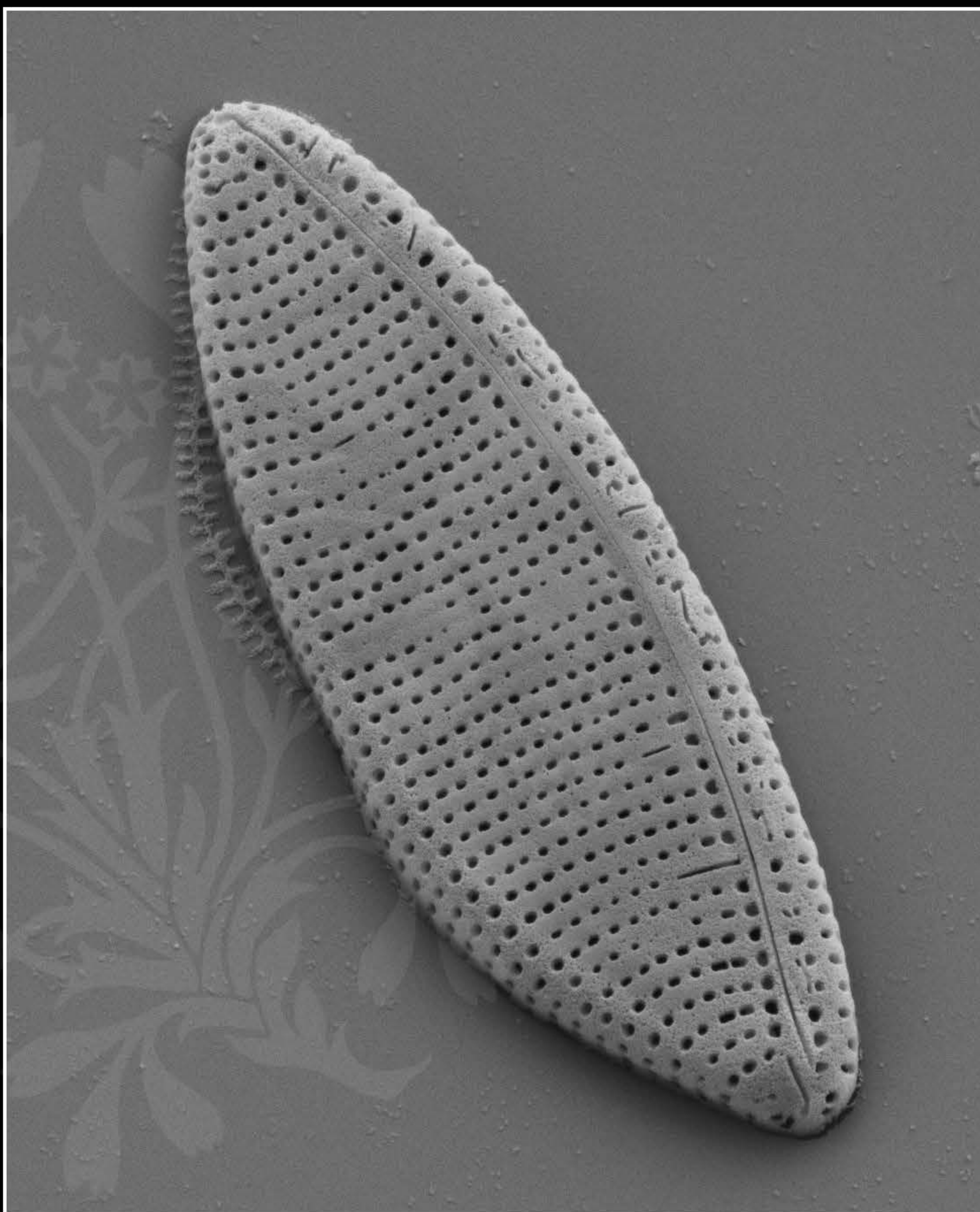
EHT = 4.00 kV

Signal A = SE2 Date :28 Sep 2017

WD = 5.1 mm

File Name = TCC586_13.tif





1 μm

Mag = 18.00 K X

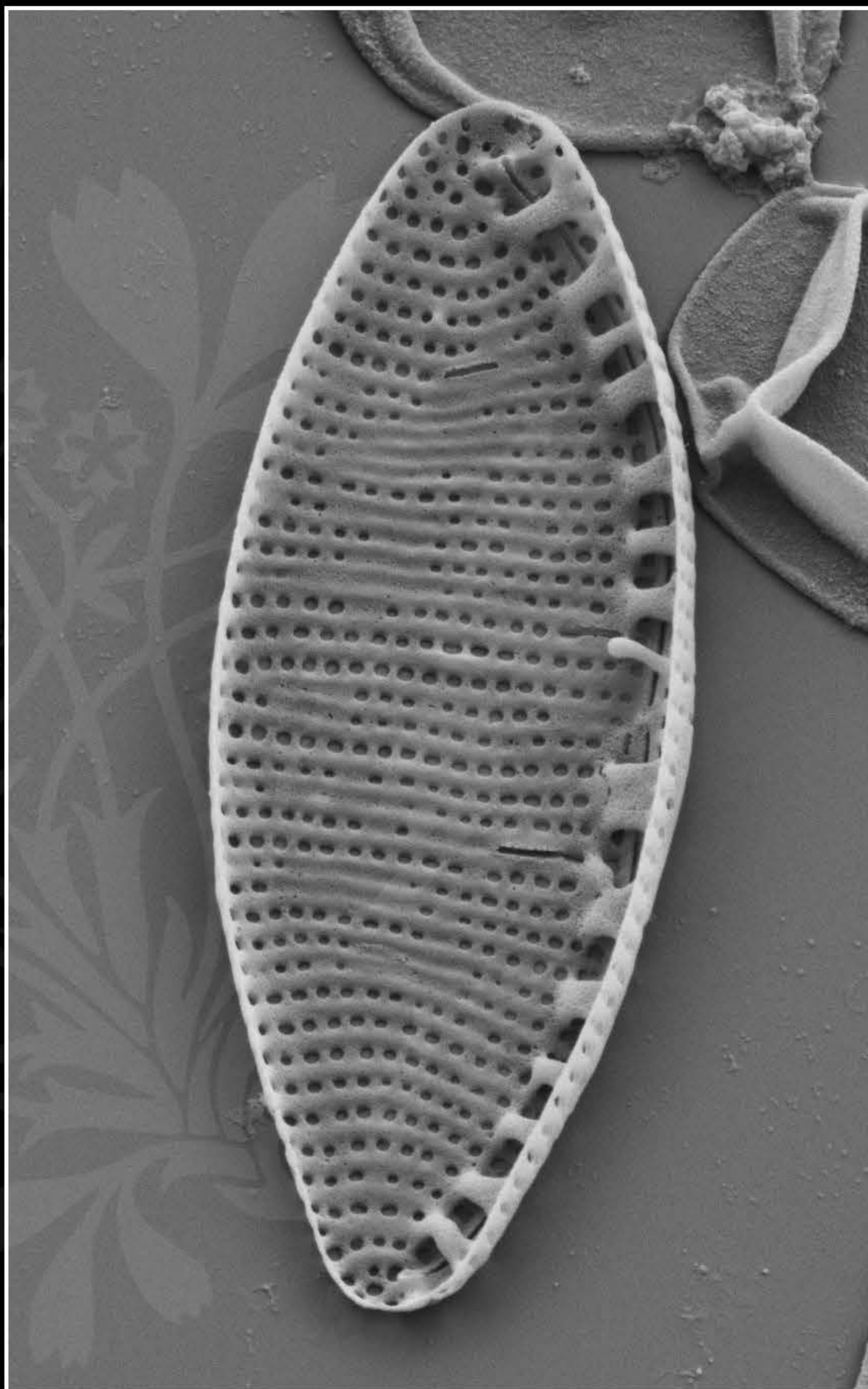
EHT = 4.00 kV

Signal A = SE2 Date :28 Sep 2017

WD = 5.1 mm

File Name = TCC586_14.tif





1 μm

Mag = 18.00 K X

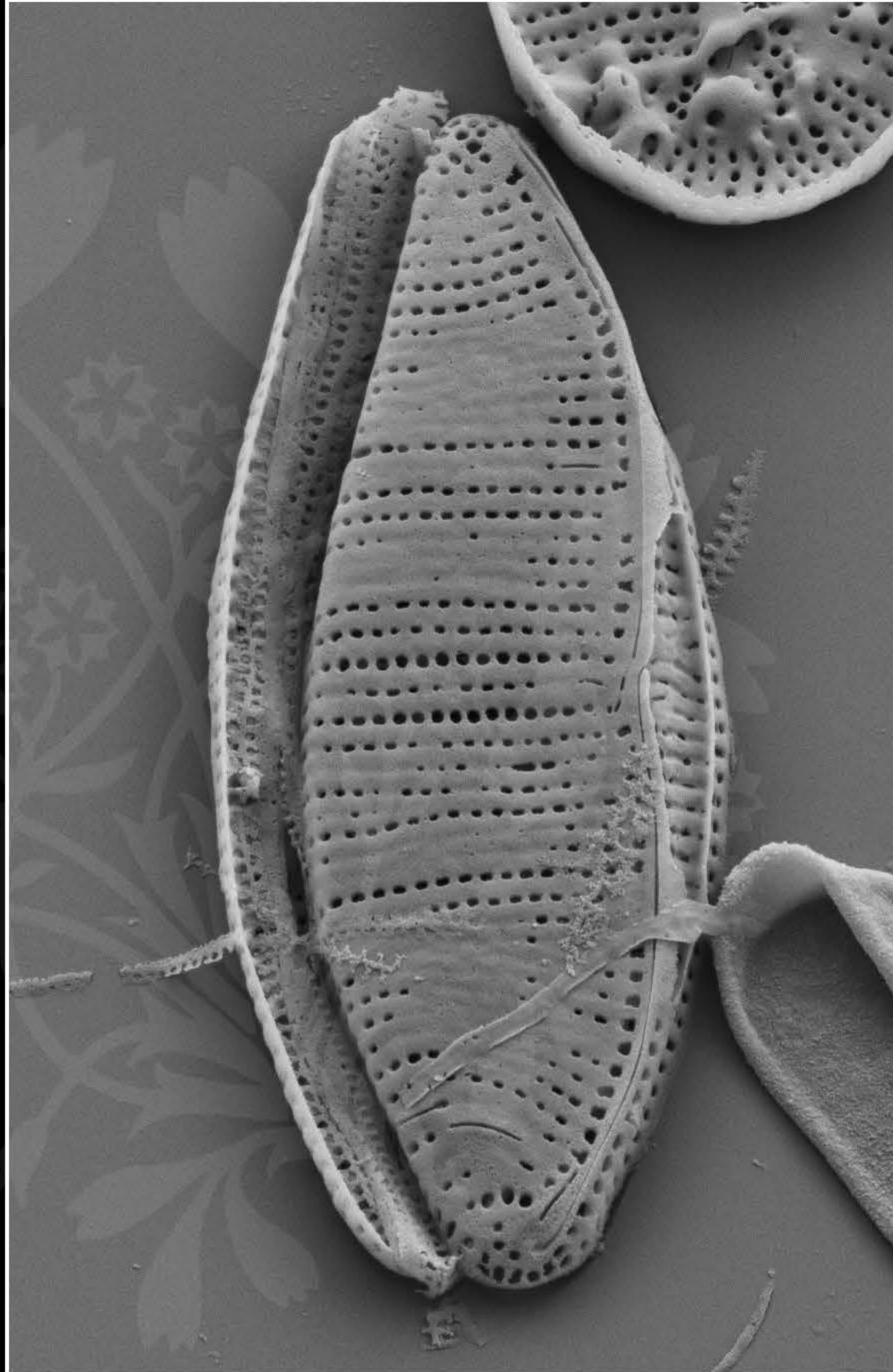
EHT = 4.00 kV

Signal A = SE2 Date :28 Sep 2017

WD = 5.1 mm

File Name = TCC586_15.tif





1 μm

Mag = 15.00 K X

EHT = 4.00 kV

Signal A = SE2 Date :28 Sep 2017

WD = 5.1 mm

File Name = TCC586_16.tif

